



Sac Osage Electric Cooperative

December 2024

News



Your Touchstone Energy® Cooperative
The power of human connections®



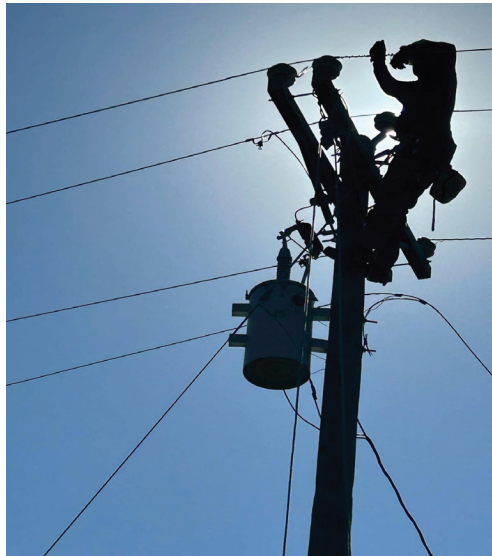
P.O. Box 111, 4815 E HWY 54
El Dorado Springs, MO 64744
Telephone: 800-876-2701
Visit us on the Web - www.sacosage.com

SAC OSAGE ELECTRIC LINEMEN HELP WITH HURRICANE RELIEF IN GEORGIA

On October 8th, 2024, four linemen from Sac Osage Electric Cooperative departed El Dorado Springs to assist linemen from all over the United States with hurricane relief efforts. These men worked several hours a day to help restore electricity to residents in the state of Georgia.

After completing their duties in Georgia, Randy Ridgway, Garrett Mays, Kelly Eck and Rodney Williams returned home to their families on Sunday, October 20th.

We want to thank these linemen for their dedication, not only to Sac Osage Electric Cooperative, but to citizens across the nation.





PREVENT HOLIDAY FIRES

Cooking safety in the kitchen

The kitchen is often the heart of holiday celebrations, but it can also be a hot spot for fires. According to the National Fire Protection Association (NFPA), cooking equipment is the leading cause of home fires, accounting for nearly 20% of holiday-related incidents. Here's how to stay safe:

- **Never leave burners or the oven unattended.** Keep a fire extinguisher nearby for emergencies.
- **Ensure children stay away from the kitchen,** where hot appliances and sharp utensils can pose risks.
- **Install smoke detectors** at least 10 feet away from cooking appliances and test them monthly to ensure they're working.

Be aware of holiday fire risks

The combination of candles, fireplaces and flammable decorations increases the risk of fires during the holidays. On average, fire departments respond to 150 Christmas tree-related fires and 790 decoration-related fires annually, according to the NFPA.

Candle safety

- Only burn candles where you can **keep an eye on them.**
- **Extinguish candles before going to bed,** leaving the room or leaving the house.
- **Use heat-resistant surfaces for candles,** placing them out of reach of children and pets.
- **Keep candles away from flammable items** like trees, decorations, curtains and furniture.
- **Opt for battery-operated candles** near flammable objects.

Christmas tree fire prevention

A beautiful Christmas tree adds to the festive spirit, but it's essential to ensure it's safe.

- **Choose a fresh tree.** Fresh trees have needles that are hard to pull from branches and have a sticky trunk bottom.
- **Keep the tree away from heat sources** such as fireplaces, space heaters and vents.
- **Check the water level daily** to prevent the tree from drying out.
- **Place the tree away from high-traffic areas** and doorways.
- **If using an artificial tree,** ensure it is labeled as fire-resistant.
- **When discarding a real tree,** place it far from your home and other combustible objects, as dried trees are highly flammable.

Holiday lighting safety

Decorative lights add cheer to the season, but safety is key:

- **Purchase lights from reputable retailers** and ensure they are approved by recognized testing labs like UL or CSA.
- **Only use lights designed for outdoor use** when hanging outside.
- **Use circuits equipped with ground fault circuit interrupters (GFCIs)** for outdoor lights.
- **Avoid water and snow** when using extension cords and outdoor lights.
- Stay at least 10 feet away from power lines while hanging lights.
- **Check for broken sockets and frayed wires** before use.

- **Avoid plugging too many devices** into a single outlet.

- **Turn off indoor and outdoor decorations** when going to bed or leaving the house.

Fireplace safety tips

A cozy fireplace is a holiday favorite, but it requires careful handling.

- **Decorate wisely.** Avoid hanging flammable decorations like stockings and greenery directly on the mantel.
- **Perform annual maintenance.** Have your chimney and fireplace checked and cleaned at least once a year.
- **Use a screen.** Install a screen to prevent embers from landing on floors or carpets.





Sac Osage Electric Cooperative

News



Give to Operation Round-Up Sign Up Today

It's easy to support the Sac Osage Electric Operation Round-Up program by just "rounding up" your bill to the next full dollar amount.

Your contributions help local people that are less fortunate. Operation Round-Up funds have been disbursed to the El Dorado Christmas Basket Fund, Nevada Community Outreach, the Osceola Christmas Fund, the Salvation Army, and the Stockton Christmas Fund.

The average donation is about 50 cents per month, with a maximum of \$11.88 per year. Together with other members who support this program, your pennies can really make a difference in the lives of people in the Sac Osage Electric Cooperative service territory.

Please fill out the following information and mail this form to Sac Osage Electric Co-op.

MAIL: Sac Osage Electric Cooperative
PO Box 111
El Dorado Springs, MO 64744



Sac Osage
Electric Cooperative
Your Touchstone Energy® Cooperative



Yes! Sign Me Up For Operation Round-Up.

Name: _____

Address: _____

Phone Number: _____

Signature: _____

Sac Osage Account Number: _____



.....**Office Use Only**

Employee Initial: _____

Date Received: _____



GIVE THE GIFT OF CONNECTION THIS CHRISTMAS SEASON.

**Check high-speed internet off the list this year
with Connect, powered by Sac Osage Electric.**

CHECK YOUR AVAILABILITY!

Visit ConexonConnect.com,
scan the QR code or call us at
844-542-6663 to sign up today.



**Locally Focused,
High-Speed Internet.**

