



# Sac Osage Electric Cooperative

## News

October 2020

P.O. Box 111, 4815 E HWY 54  
El Dorado Springs, MO 64744  
Telephone: 800-876-2701

Visit us on the Web - [www.sacosage.com](http://www.sacosage.com)



A Touchstone Energy® Cooperative 

## Sac Osage Program Promotes Safety and Efficiency

Electric cooperatives have a long history of promoting safe usage of electricity to their members. From the first visits with farmers in their homes, safety programs have gone hand in hand with rural electrification. Sac Osage continues that tradition with an interactive safety and efficiency presentation that can be customized for all ages.

The presentation focuses on three areas of electricity usage.

### Safety:

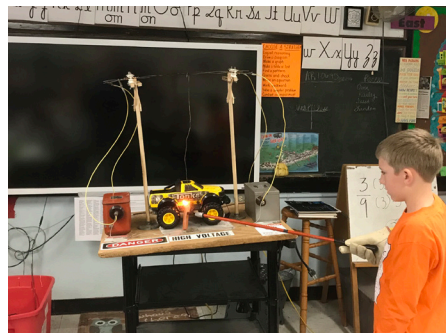
- Watch out for power lines
- What to do in case of an electrical accident
- Fire prevention
- Storm Safety

### Efficiency:

- Why do LED's make cents?
- What can everyone do to save energy?
- Why do we need to make energy conservation a priority?

### Generation:

- What's a watt?
- Where does energy come from?
- What does it take to power everyday household items?



A student at Appleton City elementary gets a first-hand lesson in electrical safety.



The presentation can be customized to groups and events like the EHS FFA Day.

To schedule the presentation for your group, call the co-op and ask for Aaron or Janna. We also have special presentation materials for first responders to prepare them for emergencies involving electric lines.



The cooperative energy bike gives people a good idea of what it takes to generate electrical energy.



The presentation tells you what to do in case of a vehicle accident involving a power line.



Part of the electrical safety information includes staying away from electrical equipment like the transformer above.

When the coronavirus canceled schools last spring, many opportunities were lost. Scheduled events didn't occur, and Sac Osage was not able to reach as many groups as in past years. As schools start again and other groups and gatherings take place the Cooperative is ready to resume the important duty of educating members about safe, responsible electricity usage.



October is National Co-op Month.

### Defined by Principles

1. Voluntary & Open Membership
2. Democratic Control
3. Members' Economic Participation
4. Autonomy & Independence
5. Education, Training & Information
6. Cooperation Among Cooperatives
7. Concern for Community





In this 1967 photo Line Superintendent, Ray Fortney holds a cracked insulator as Member Services Advisor, Walt Ryan, aims his rifle to illustrate the cause of many service outages.

is not a safe and legal target. People who intentionally take aim at utility objects are risking criminal prosecution. The targeting of utility structures can cause line outages that may put hundreds of members out of service. Today this means families going without water from their well, without heat or air conditioning, and possibly without vital medical equipment. Testing your aim against an insulator is anything but harmless fun.

What is beyond a hunter's target is also important when it comes to utility poles and lines. Shooting at a target above the horizon may endanger the same utility structures. When hunting birds or shooting aerial targets, the hunter should position himself or herself in such a way that the target will be away from utility structures. If the target goes in an unexpected direction and lines up with something the hunter would not ordinarily shoot, he or she should not fire. It is always better to miss a target than to shoot something you do not intend to shoot.

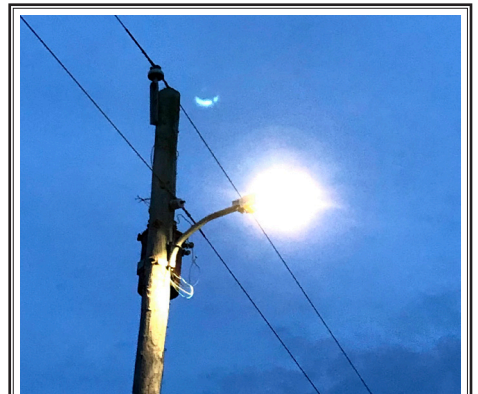
## Utility Structures Are Not Targets

Missouri Department of Conservation lists the top four rules for a safe hunt. 1. Always point the muzzle in a safe direction. 2. Identify your target and what is beyond. 3. Keep your safety on. 4. Keep your finger off the trigger.

While all the rules are important to follow to have a safe hunt, number 2 also comes into play with keeping everyone's electricity going. The De-

partment's website in clarifying the second rule says, "Ethical hunters always identify their target as safe and legal before pulling the trigger. The shooter must also check what's beyond the target and never shoot at an animal on the horizon where there's no safe backstop for the projectile."

Obviously a utility pole, transformer, insulator, security light, or other safety device



The cooperative sells LED dusk to dawn lights and installs them on the meter pole. The cost is \$174 and can be split into 24 no-interest payments.