



August 2014

RURAL MISSOURI

# Sac Osage Electric Cooperative

# News

P.O. Box 111, 4815 E HWY 54  
El Dorado Springs, MO 64744  
Telephone: 800-876-2701

Visit us on the Web - [www.sacosage.com](http://www.sacosage.com)

## Annual Meeting

Sac Osage Electric Cooperative held its Annual Meeting of Members on Tuesday, June 10, 2014. It was a pleasant spring evening with over 1,000 people in attendance, including members, special guests and friends of the cooperative. Randy Newman, aka "Doofus", a multi-talented and exciting performer, played his fiddle and entertained with jokes and stories while members registered, voted and ate. Members enjoyed famous Lion's Club "Lion Burgers" and Schwan's ice cream sandwiches while visiting with each other.

During the business meeting it was announced that two unopposed director candidates were declared elected to the Board. They were Mr. Raymond Huesemann from District 4 and Mr. Gene Brockus from District 6. No nominations were received for the director position in District 5 being vacated by Bradley Thompson.

A drawing was then held and numerous prizes donated by the cooperative and its vendors were given away to some very lucky attendees, including a 42" flat screen TV, an Apple iPad, a Kindle Fire and several children's bicycles.

After all the ballots were counted it was later announced that members of Sac Osage Electric Cooperative had approved the Proposed Amendment to the 3rd paragraph of Article IV, Section 2 of the Bylaws of Sac Osage Electric Cooperative, regarding the extension of director term limits.



Taylee Hudson girls tricycle winner



Future Cooperative Member



Featured Entertainer Randy Newman "AKA Doofus"



Celebrating 40 years of work experience





## While the sun shines

Once symbolic of a good harvest, "making hay" has many superstitions associated with it. For good luck, wish on a wagonload of hay. But, if the hay is baled, you'll have to wait until the bales are opened for the wish to



come true. Avoid approaching a wagonload of hay from the rear because it may bring misfortune to watch the hay disappear from your sight. Bad luck may come your way if you fail to make a wish on a wagonload of hay, so always have your wish handy.

## Hooray for the day!

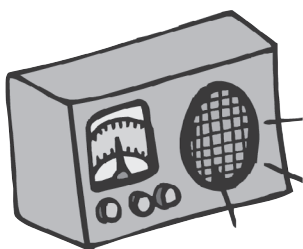
Aug. 21 — what a day! On that day in 1878, the American Bar Association was formed. Exactly 10 years later, in 1888, William S. Burroughs patented the adding machine. On Aug. 21, 1904, musician Count Basie was born. On the same day in 1911, the Mona



Lisa was stolen. August 21, 1920, saw the birth of author Christopher Robin Milne, followed in 1936 by basketball player Wilt Chamberlain and then, in 1938, by singer Kenny Rogers. In 1959, Hawaii became the 50th state on this date.

## Only the beginning

On a quick trip across the radio dial today, you will find a wide cross-section of offerings, from various types of music and sports to familiar advertising jingles. The possibility of this kind of brand-name recognition was not immediately evident to the early radio industry or its prospective clients. Radio's first



commercial was aired on Aug. 28, 1922, over station WEAJ in New York. A realty company sponsored the spot to promote Hawthorne Court, a group of apartments in Queens, and they paid the going rate: \$100 for 10 minutes of airtime.

For recipes, gardening tips and weather forecasts, visit:  
[www.almanac.com](http://www.almanac.com)

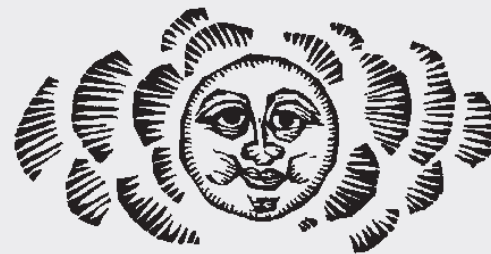
### Recipe for Dilly Beans



4 pounds fresh green beans  
8 teaspoons dill seed  
4 teaspoons mustard seed  
16 cloves garlic  
5 cups white vinegar  
5 cups water  
1/2 cup salt

Wash, trim and cut beans to fit into pint jars. Sterilize eight pint jars. Fill each with 1/2 pound of beans, 1 teaspoon each of dill and mustard seed and two halved cloves of garlic. Boil together the vinegar, water and salt, and pour over the beans, filling to within 1/2 inch of the jar tops. Seal jars tightly and process in a boiling-water bath for about 15 minutes. Tighten lids and let jars cool. Store for 2 weeks. Makes 8 pints.

## THE OLD FARMER'S



# WEATHER PROVERBS

**Dry August and warm doth harvest no harm.**

**Fog in August indicates a severe winter and plenty of snow.**

**At St. Bartholomew there comes cold dew.**

**If many meteors in summer, expect some thunder.**

**If horses stretch out their necks and sniff the air, rain will ensue.**

**When it rains in August, it rains honey and wine.**

**Onion's skin very thin, mild winter coming in; onion's skin thick and tough, coming winter cold and rough.**



# Give your electric water heater an energy boost

— Consider these steps to keep your water heater working efficiently —

Dear Jim: My 80-gallon electric water heater is getting old, but it does not leak. Since it is old, I imagine there are some things I can do to make it operate more efficiently. What improvements do you recommend? - Ron H.



by Jim Dulley

**D**ear Ron: Heating water for home use is one of the greatest contributors to your monthly utility bill. For a typical family of four, it is not unusual for water heating to consume 20 to 25 percent of the total annual energy use.

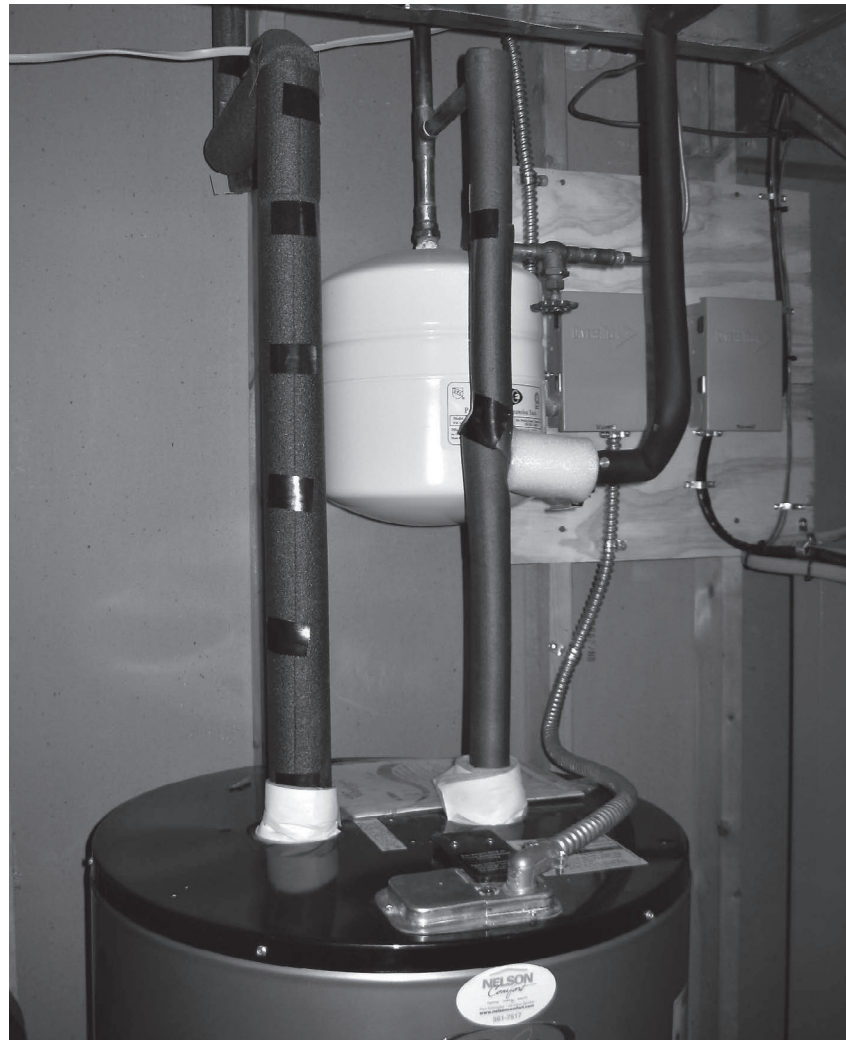
An electric water heater is a very simple device. It is basically a big insulated tank of water with an upper and a lower resistance heating element. The lower element is the main one used. When most of the hot water has been used, the lower one goes off. The upper one then comes on to supply hot water more quickly since the water is drawn from the top of the tank.

Even if you do not use any hot water, the lower element will cycle on at times to make up the heat lost through the tank walls (called standby losses). Heat also can be lost through the tank's piping, especially if the tank is without heat traps. Your older water heater likely has a couple of inches of fiberglass insulation between the glass-lined metal tank and the external skin.

### Insulating the water tank

Place the back of your hand against the water heater tank near the top or on the top. If it feels warm, it is losing heat. Adding an insulation wrap kit would save money. With a tall 80-gallon tank, the insulation wrap may not reach all the way down to the floor. This is OK because the majority of heat loss is from the upper part of the tank.

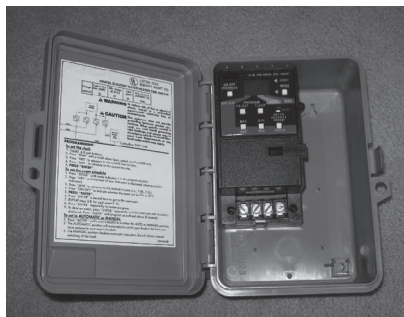
If you have some old fiberglass wall insulation, wrap that around the tank with the vapor barrier facing to the outside. Putting a layer of reflective radiant barrier over the insulation also helps. You certainly can install your own insulation, but a kit from a home improvement store is roughly \$20, easy to install and includes instructions (get one with an insulating value of at least



Tubular foam insulation is placed over water pipes immediately above the water heater to minimize energy-robbing currents.

R-10). If you DIY, it is important to tape and seal the joints in the insulation (where the insulation on the top meets the sides) to create an airtight barrier. Fiberglass insulation is only effective if you prevent air from passing through it.

Also, at least once a year, drain a gallon of water from the drain valve at the bottom of your tank. This will flush out sediment, which collects there. Sediment insulates the water from the heating element. This is important to do with a gas or propane water heater, but it also helps on an electric one.



A timer for electric water heaters can make it easy to turn off water heater during the daytime and during peak demand periods.

### Managing the water temperature

It is important to keep the water temperature as low as possible. A greater temperature difference between the hot water and the air in your basement or utility room increases the tank's standby losses. During the summer, these losses heat up your house and make your air conditioner run longer, creating a double energy expense.

Check the temperature of the hot water at the faucet where you use the most hot water. I keep the water temperature at my house at only 110 degrees. If you keep it so

hot that you need to add cold water to tolerate the temperature, it's too hot. Most detergents work well in cold water, and dishwashers have built in preheaters. Be sure to turn off electricity to the water heater before making any adjustments.

Feel the temperature of the hot water outlet and cold-water inlet pipes. If they are fairly warm, it means hot water, because it is less dense, is naturally circulating upward and cooling off. Put tubular foam insulation on the water heater inlet and outlet water pipes to minimize heat loss. This insulation is split on one side, making it easy to install over pipes. Insulate the first 4 to 6 inches of the exposed piping.

If you are having some other plumbing work done, have your plumber install heat trap fittings in the water heater to block this circulation in the pipes. Paying to have a plumber come only to install heat trap fittings won't make good economic sense.

### Installing a timer

Installing a water heater timer can be effective if your work schedule means you typically do not use hot water during a longer regular time period. This keeps the heating elements from coming on. The temperature should not drop much on a well-insulated tank. Check with your electric co-op regarding load management programs. They can identify the times of day when the demand for electricity is less.

If you end up deciding to get a new electric water heater, select a 12-year warranty model. These have higher R-value foam insulation in the tank walls than a cheaper 6-year model. Also, most of the 12-year models have electronic digital controls, which simplify setting the hot water temperature. They also have a vacation-mode setting to save electricity when you travel.

Heat pump water heaters also should be considered if you're looking to make a purchase. These water heaters use electricity to move heat from one place to another rather than generating heat directly. While they tend to cost more initially, they cost less to run, which can save money over time.

*Have an energy-efficiency question for Jim? E-mail him at [contact@dulley.com](mailto:contact@dulley.com) or write to: James Dulley, Rural Missouri, 6906 Royalgreen Drive, Cincinnati, OH 45244.*

*Visit [www.dulley.com](http://www.dulley.com) to read past articles.*





## Working together to reduce energy use

*PEAK HOURS ARE THE BUSIEST TIMES FOR LOCAL COOPERATIVES, SINCE MANY PEOPLE ARE USING ELECTRICITY AT THE SAME TIME. IN ADDITION, IT COSTS YOUR CO-OP MORE TO GENERATE ELECTRICITY WHEN DEMAND SOARS DURING PEAK PERIODS — AND THE COST OF YOUR ELECTRICITY ALSO MAY RISE. OBVIOUSLY, USING LESS ELECTRICITY DURING PEAK PERIODS CAN SAVE YOUR CO-OP AND YOU MONEY.*

### BECOME A PEAK SAVER

A “Peak Alert” given by a Cooperative is a notice encouraging its members to make a special effort to manage load by reducing their energy usage on days when demand for electricity is highest. Peak alerts often occur for short periods of time, often in the summer on extremely hot days between the hours of 4 p.m. and 7 p.m. A “Peak Alert” is not a notice of a power shortage.

Here are just a few ways you can help reduce demand for electricity during peak hours:

- Perform household chores and activities in the cool of the day or late evening.
- Use energy-efficient appliances like your microwave oven instead of your stove or oven for cooking.
- Do laundry and clothes drying early in the morning.
- Wait to run your dishwasher until you go to bed.

Doing this could help reduce the power costs charged by the Cooperative’s energy provider.



## Youth Tour

Hard work and creativity has paid off for one area high school junior. McKensi Marshall, a student attending El Dorado Springs R-II High School, represented Sac Osage Electric Cooperative on the Rural Electric Cooperative Youth Tour in Washington, D.C. Ninety four high school juniors participated in the 51st annual Missouri Electric Youth Tour to Washington, D.C. June 13-19. The six-day tour provided an action-filled week for high school students, offering them opportunities to learn first-hand what it is like to be involved in politics, community service and today’s pressing issues. Highlights included a special session on Capitol Hill with Senator’s Roy Blunt and Claire McCaskill to discuss the process of government and issues of the day, and increasing their knowledge of electric cooperatives and American history. The young people also visited with representatives from their congressional districts, toured famous monuments, the Smithsonian Institution’s museums and the Arlington National Cemetery. The group also took a sightseeing and dance cruise on the Potomac River one evening with delegates from other states. Other events of the week included participation in the Electric Youth Day, during which a special program coordinated by the National Rural Electric Cooperative Association brought together over 1,400 Youth Tour delegates from across the United States. The delegates enjoyed featured speeches by government leaders and motivational speakers, such as Mike Schlappi, an inspiring four-time Paralympic medalist and two-time world wheelchair basketball champion. Since 1964, the nation’s electric cooperatives have sponsored more than 40,000 high school juniors and seniors for visits to their U.S. congressional delegations, energy and grass roots government education sessions, and sightseeing in Washington. For more information about the AMEC Youth Tour program, please go to [www.amec.org/youth.html](http://www.amec.org/youth.html).